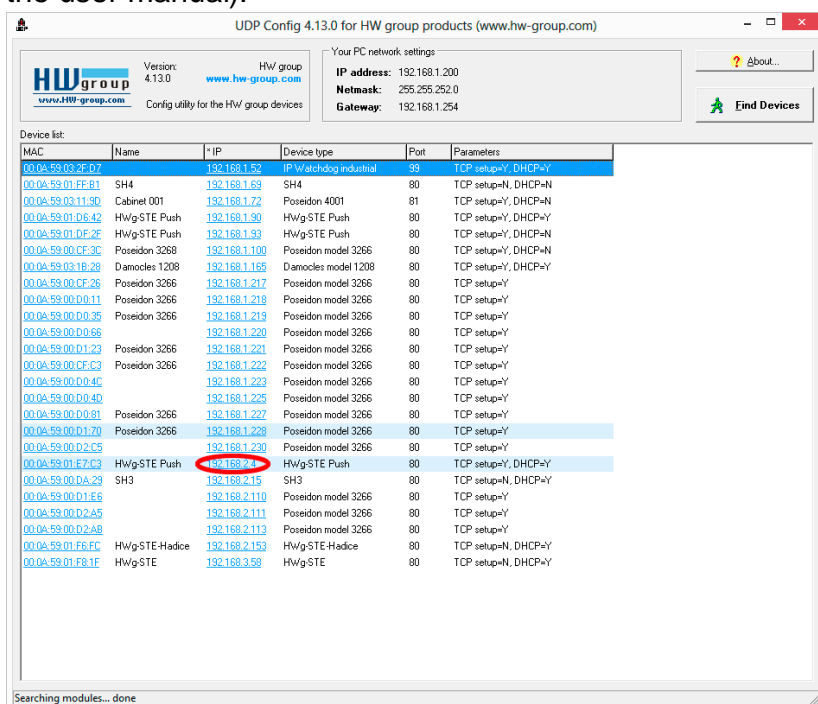


# Connecting HWg- PWR3/12/25 to SensDesk portal

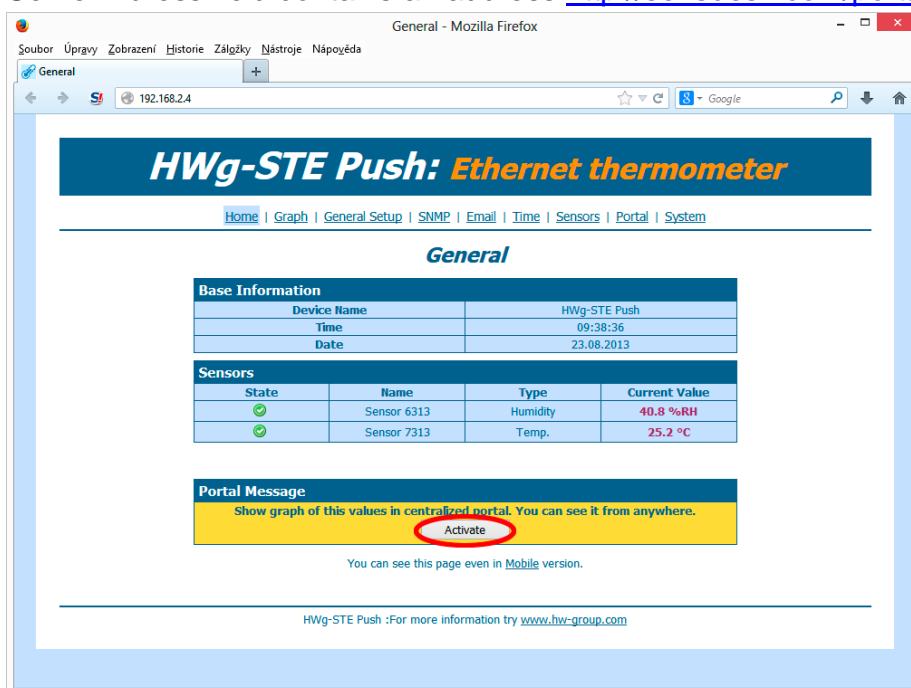
*This document shows the steps to connect HWg-PWR 3/12/25 to SensDesk portal and the portal configuration.*

# Connecting to the Portal

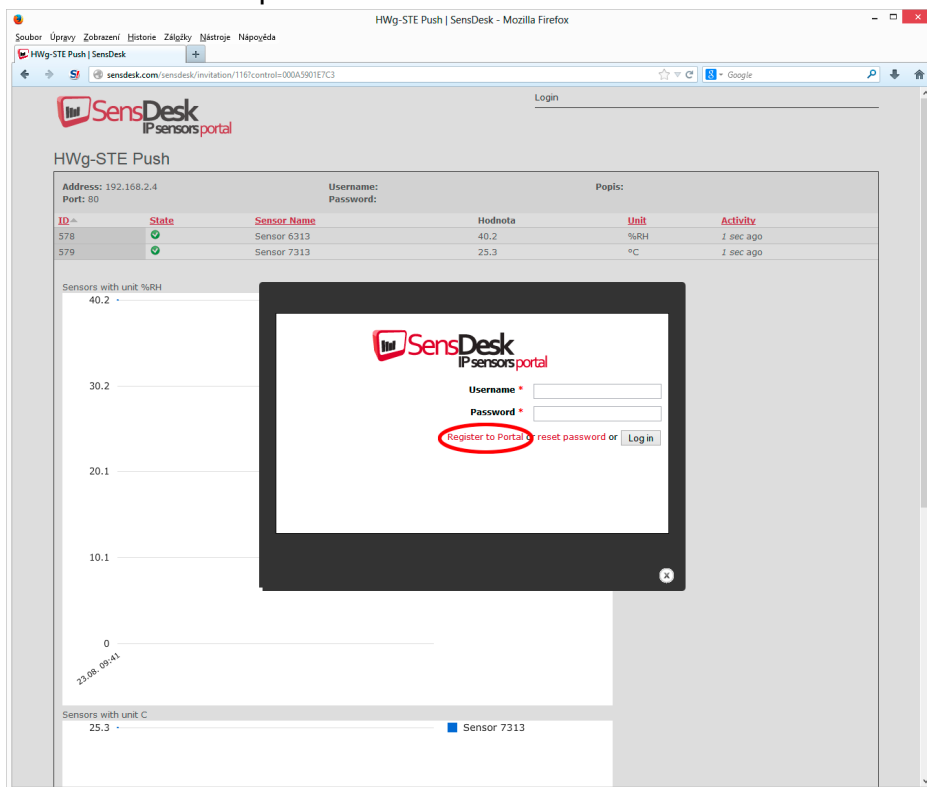
- 1) First connect the device to your network and set the network parameters (First Steps chapter in the user manual).



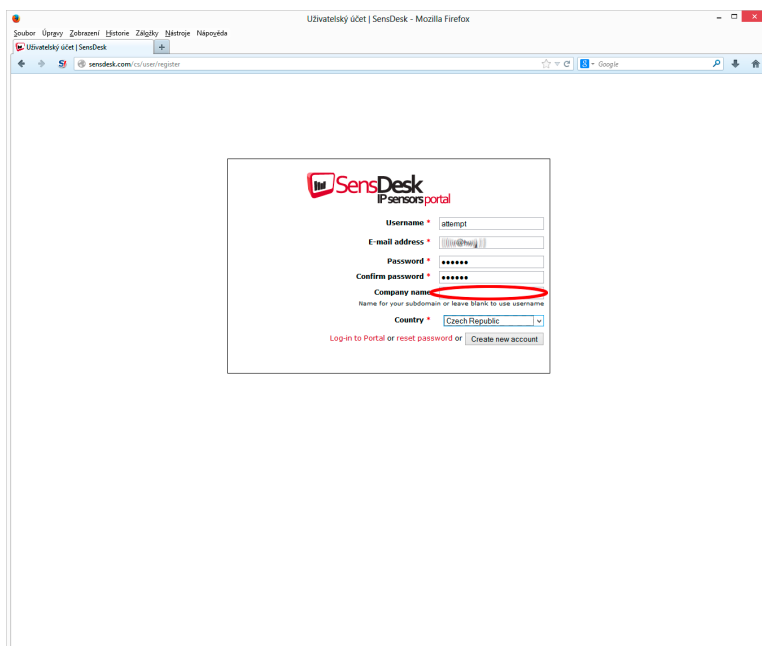
- 2) Then open the WWW setup on the Portal tab. In the Portal Config section, please tick the Portal option, save the changes with a Save button and then press the Manual Push button. In case you have an older FW version or any changes to the settings have been done, please check that Server Address field contains an address <http://sensdesk.com/portal.php>.



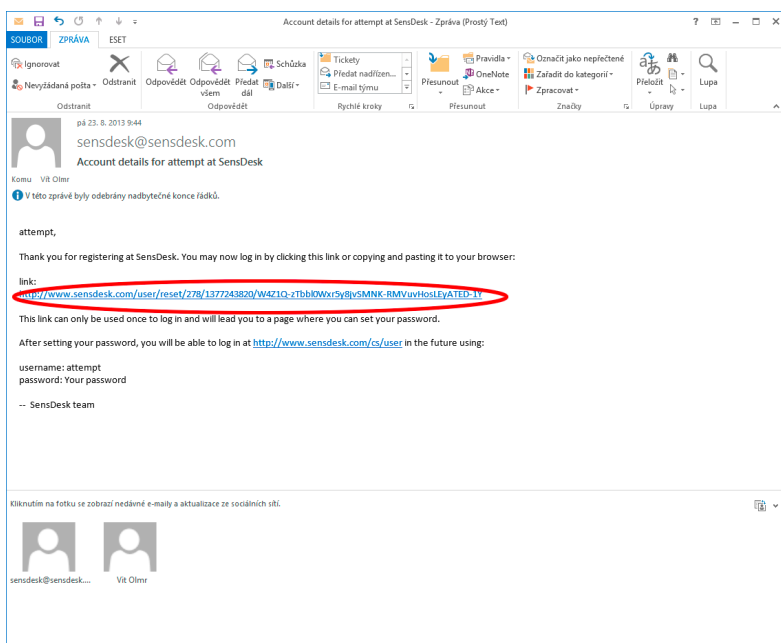
- 3) By clicking a link *SensDesk.com: register your IP sensor*, you will be redirected to a login page of SensDesk.com portal.



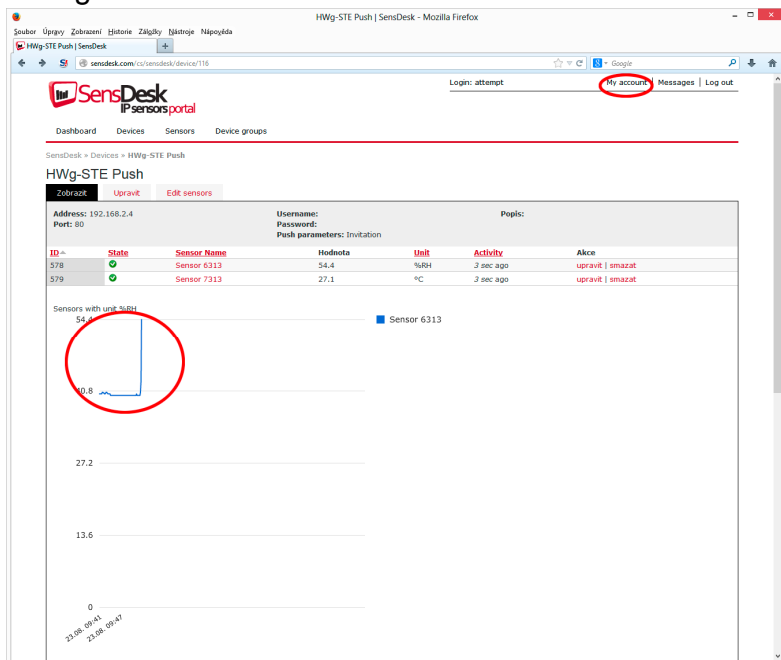
- 4) In case you already have a user account, please enter your login details and the device will be automatically assigned to your account. If you do not have a SensDesk account yet, click the *Register to Portal* link and a registration form will be shown.



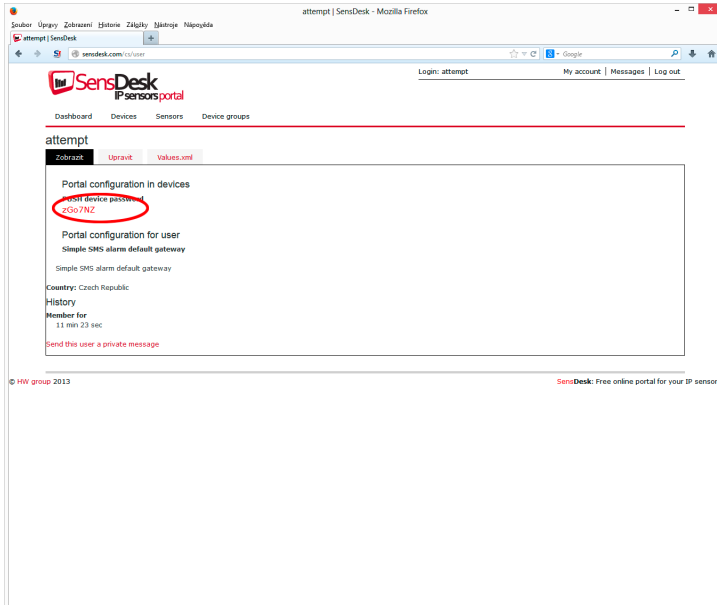
- 5) Enter the login details for your new account and a correct e-mail address. This e-mail address has to be unique for the server (cannot be already registered by another user). *Company name* allows you to create your own 3rd level domain (usually *company.sensdesk.com*). A user name will be used if the Company name field is left empty. After clicking the *Create new account* button, a user account will be created and at the same time a confirmation email is sent to the entered e-mail address. This e-mail contains a confirmation link which has to be used in order to activate the account.



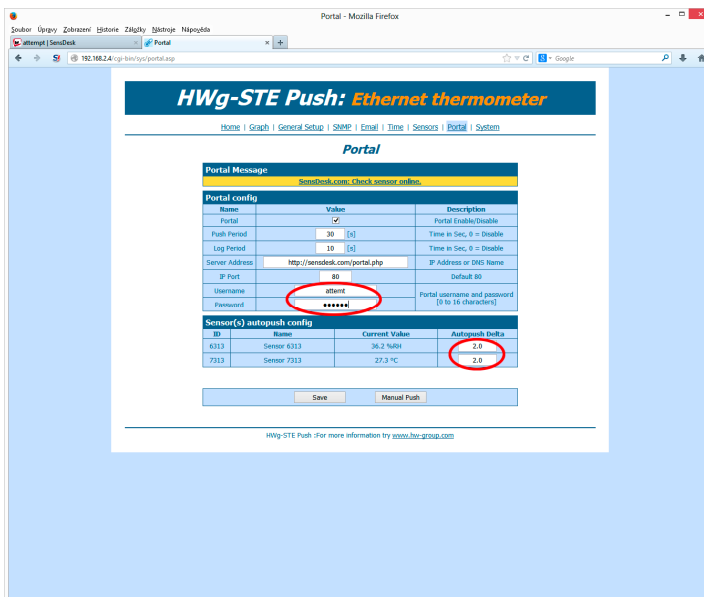
- 6) By activating the account, you will be redirected to the *Invitation page* of the device. At this moment, the data-sending period is set to 10 seconds to show the sensors functionality. This page is active only for approximately 15 minutes after the activation, then the logging period changes to 15 minutes.



- 7) If you check your user account configuration (*My Account* link), you will find your *Push Device Password*. This password, together with your login name, identifies the device in communication with your account and in communication of mobile applications with SensDesk. The password cannot be changed and for a security reason it is different to the login password.



- 8) PUSH Device Password can be used in devices to skip the logging procedure during assigning the device to your portal account, or in mobile applications:



HWg-Sensors		
ALL	ALARMS	Group: Doma
Vitek Doma	84	Cos Fi 1
Vitek Doma	38	Cos Fi 2
Vitek Doma	58	Cos Fi 3
Vitek Doma	0.7 A	Current
Vitek Doma	0.405 A	Current1
Vitek Doma	0.441 A	Current2
Vitek Doma	2.594 A	Current3
Vitek Doma	4448.557 kWh	Energy
Vitek Doma	23820.9 kWh	Energy
Vitek Doma	4136442 Wh	Energy
Vitek Doma	0	Input 1
Vitek Doma	0	Input 2
Vitek Doma	0	Input 3
Vitek Doma	0	Input 4
Vitek Doma	0	Input 5
Vitek Doma	0	Input 6
Vitek Doma	0	Input 7
Vitek Doma	0	Input 8

Reload Sensors Page

Portal function periodically sends the data to a remote server and the sending period is set by this server.

AutoPush is a function allowing unusual measured data sending, beside the periodical logging, in case that the value change is higher than the AutoPush delta parameter.