

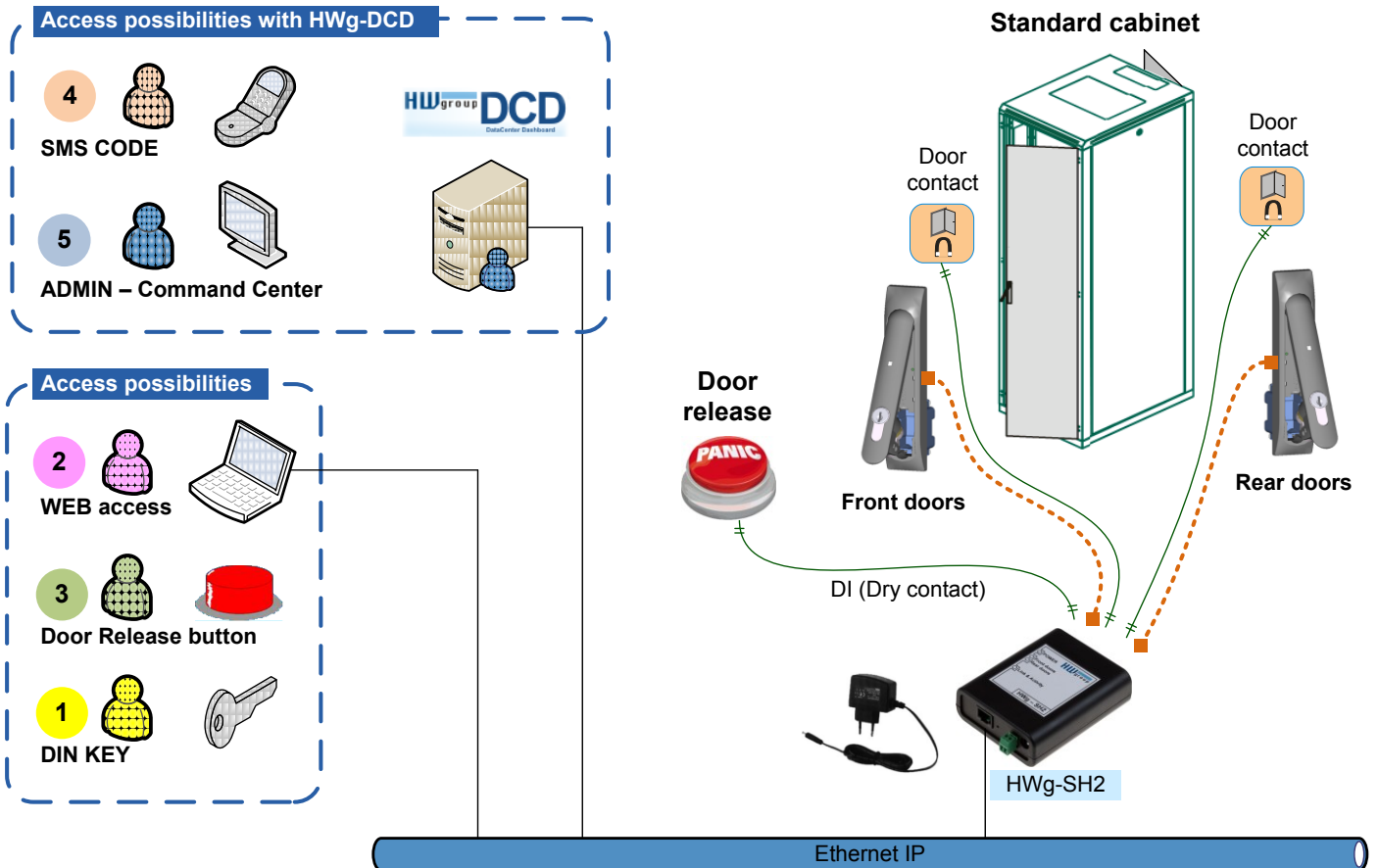
HWg-SH2: SwingHandle IP interface

Cabinet IP access system for two SwingHandles – Web & SNMP interface

The HWg-SH2 unit controls up to two (front & rear doors) electro-mechanical swing handles for cabinet door access. It can detect failure opening even by side doors input.



- Two HWg-SH1 Electronic Locking Swing-handles can be connected (Southco H3-EM)
- Embedded WEB server, Email / SNMP alerts
- Door contact dry contact inputs for front/rear door status detection.
- M2M protocol to control cabinet access from the command center application (HWg-DCD Data Center Dashboard).
- External lock or “Door opening button” can be connected



Applications

- Wide area Telco infrastructure access
- Remote sites (highways, BTS...)
- Datacenter secure access
- Telecom rooms

Features

- Web interface for opening door & setup
- Two HWg-SH1 Electronic Swing-handles can be connected (Southco H3-EM)
- Additional door contact can be connected for each doors.
- Door(s) can be opened by M2M protocol, from Web or external lock (release doors button).
- Vandal detection when the HWg-SH2 unit is disconnected from the electronic Swing-handle or doors are violently opened.
- Log file with last door access overview
- Time automatically synchronized over the network.
- With HWg-DCD can be controlled over SMS.

Features

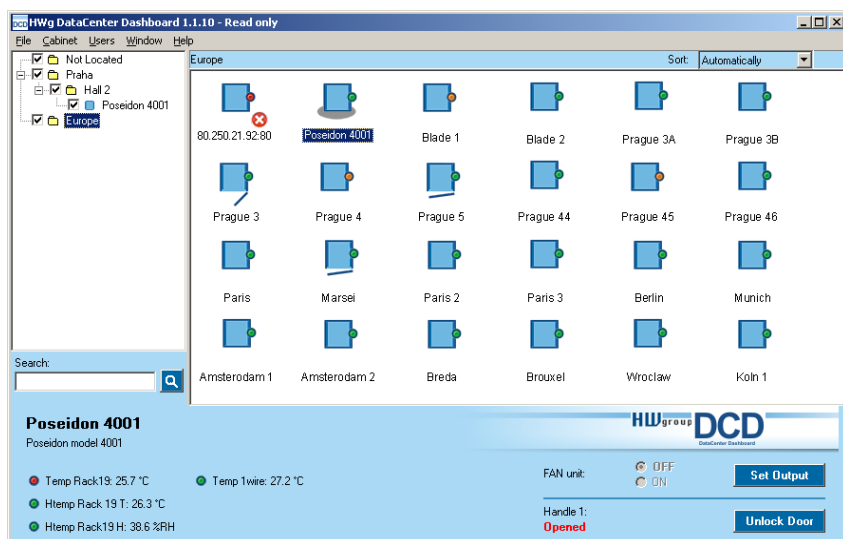
- **Peripherals**
 - HWg-SH1 swing handle 2
 - Door status (Dry contact) 2
 - Ext. Lock (Door release button) 1
- **Communication**
 - WEB interface for setup & control
 - M2M protocol (HWg-DCD supported)
 - SNMP v.2 to read only
- **Network Interface:** 10/100 Mbit
 - Protocols: TCP/IP, HTTP, NTP, SNMP
- **Power:** 12V / 0.5A
- **Dimensions:** 98 x 78 x 31 mm

Access control with HWg-DCD software

- 1) DIN KEY
- 2) WEB access
- 3) External reader (ext. RFID reader required)
- 4) SMS code by any GSM phone
- 5) ADMIN Command center (HWg-DCD)

Access control – no software

- 1) DIN KEY
- 2) WEB access
- 3) Door Release Button (external lock)



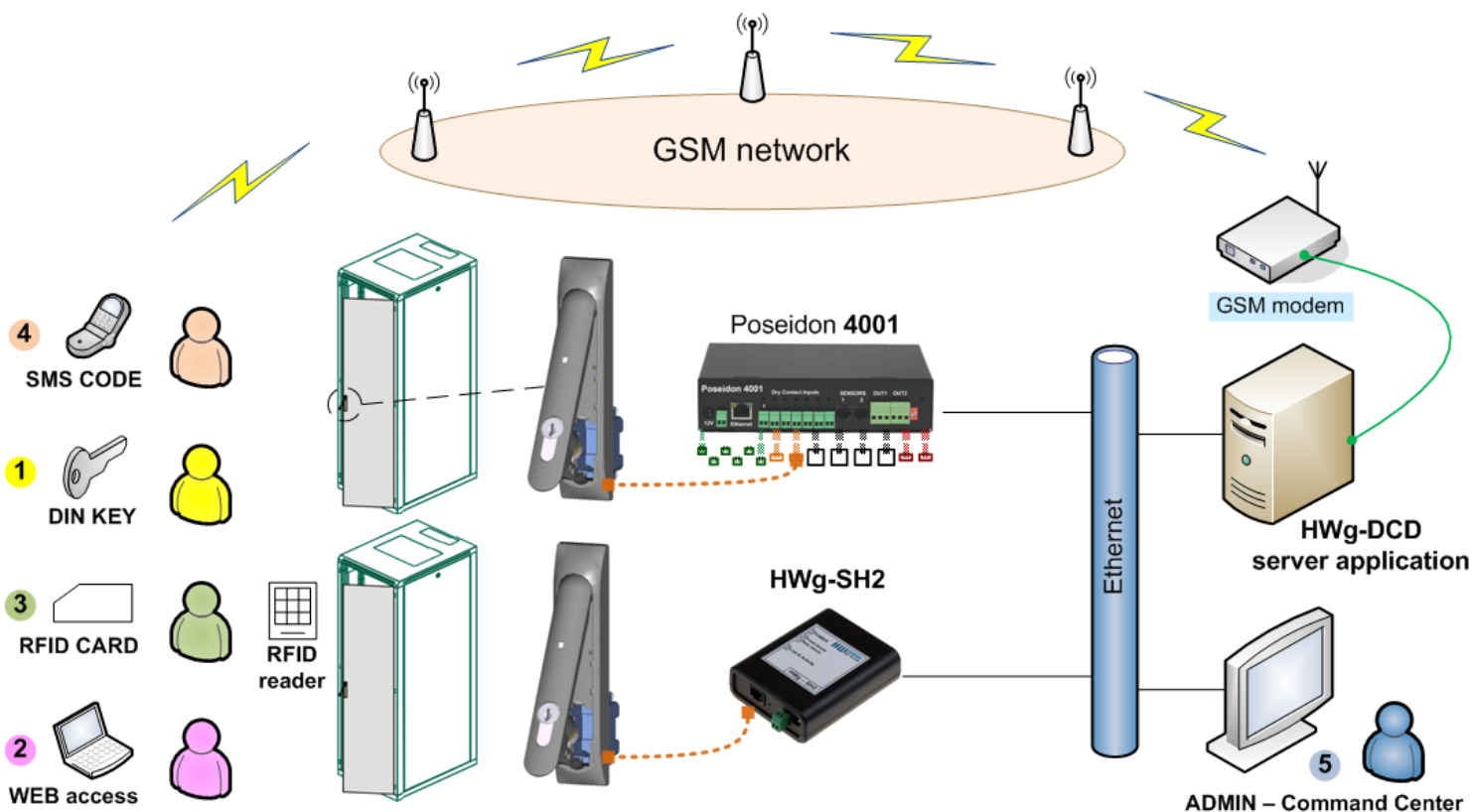
HWg DataCenter Dashboard

- Remote RFID codes support
- Poseidon 4001 / SH2 / SH3
- Group of SwingHandles status signalization
- Groups of users / cabinets

Purchase numbers

HWg-SH2 set	Starting pack contains SwingHandle HWg-SH1, SH2 unit, Power adaptor and CD with SW.
HWg-SH2	HWg-SH2 plain model, without accessories, without power adaptor
Power adaptor 12V	Wall plug power adaptor
HWg-SH1	H3-EM SwingHandle (cutout 25 x 150 mm), 4m connection cable included

	HWg-SH2	HWg-SH3	Poseidon 4001
Environmental sensors	✗	✗	✓
Swing handles + door contacts	✓	✓	✓
M2M (SNMP, XML)	✗	✗	✓
Device Web interface	✓	✓	✓
External lock DI (Door release button)	✓	✓	✓
RFID reader (RS-232 & Wiegand)	✗	✓	✗
Local database (Web access)	✗	✓	✗
Local GSM modem (RS-232)	✗	✗	✓
SMS access & alerts (with DCD)	✓	✓	✓
Command Center access	✓	✓	✓



Door control options	HWg-SH2	HWg-SH3	Poseidon 4001
(1) Cylinder DIN Key	✓	✓	✓
(2) Device WEB control	✓	✓	✓
(3a) External lock (RFID reader)	✓	✓	✓
(3b) Local RFID reader (per cabinet)	✗	✓	✗
(4) SMS code (with DCD)	✓	✓	✓
(5) Command Center (DCD software)	✓	✓	✓
(6) Central wall terminal (with DCD)	✓	✓	✓